

P Series | LK6P | LK8P | LK10P | LK12P | LK14P | LK16P

**LIFTKING**  
Manufacturing Corp.



CONSTRUCTION FORKLIFTS

## Let Us Do The Heavy Lifting

If your success depends on the efficient and effective lifting of heavy loads on any job site, you can count on the complete line of Liftking forklifts to perform above and beyond the call of any project. Liftking has more than 45 years of expertise in designing, developing and manufacturing material handling equipment to withstand the toughest conditions.



## New Cab Design

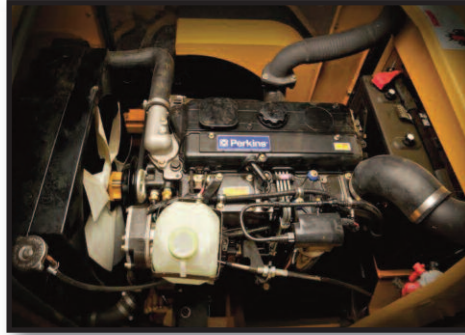
- General redesign focussed on improved ergonomics
- 30% more glass provides better visibility in all directions
- Door width enlarged by 20% offering easier entrance/exit
- Spacious operator compartment is now 25% wider

**SPACIOUS OPERATOR COMPARTMENT:** Ergonomically designed with 360-degree visibility. Optional all weather closed cab with sound insulation, defroster fan, heavy-duty heater, ergonomic controls, sliding windows and removable doors.





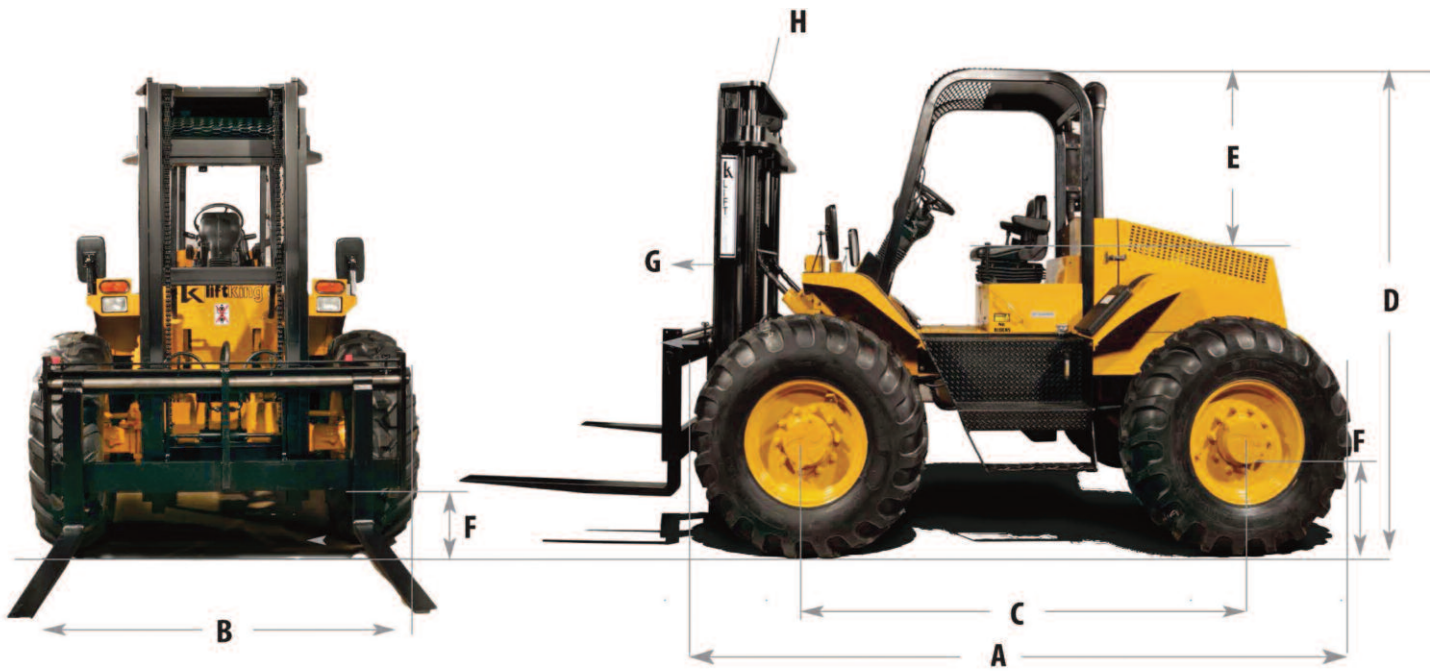
**PROTECTION:** Fully enclosed and protected electric and hydraulic systems



**ENGINE:** The P Series forklifts have a sliding hood for easy access during maintenance and house a Perkins Turbo Tier 3 emission compliant diesel engine.



**STEERING CONTROL:** 4 Wheel steering with tight turning radius and exceptional ground clearance.



	Ref		6P44	8P44	10P44	12P44	14P44	16P44
<b>Capacity @ 24" Load Center</b>		lbs (kg)	6000 (2721)	8000 (3628)	10,000 (4545)	12,000 (5454)	14,000 (6349)	16,000 (7256)
<b>Length (without forks)</b>	A	in (mm)	155 (3937)	158 (4013)	161 (4089)	174 (4419)	176 (4470)	
<b>Width</b>	B	in (mm)	88 (2235)				90 (2286)	
<b>Wheelbase</b>	C	in (mm)	94 (2388)				96 (2440)	
<b>Height to top of overhead guard</b>	D	in (mm)	110 (2794)			111 (2819)		
<b>Distance from seat to overhead guard</b>	E	in (mm)	39 (990)					
<b>Ground Clearance</b>	F	in (mm)	12 (305)				14 (355)	
<b>Mast Tilt - Forward</b>	G	degrees	38					
<b>Mast Tilt - Backward</b>	H	degrees	10					
<b>Track - Front &amp; Rear</b>		in (mm)	70.5 (1791)				75 (1905)	
<b>Weight</b>		lbs (kg)	13,520 (6133)	15,000 (6818)	17,260 (7829)	18,280 (8309)	21,900 (9954)	25,600 (9954)
<b>Travel Speed</b>		mph (kph)	19 (30)					
<b>Gradeability</b>		%	25					

Specifications P Series LK6P | LK8P | LK10P | LK12P | LK14P | LK16P

**ELECTRIC**

System Type	12 volt negative ground with circuit breaker protection
Battery	1000 AH, Maintenance Free
Alternator	85 A
Neutral Safety Start	Yes, with anti re-start protection
Lighting	Headlights, tail brake lights, reverse lights, turn signals

**TIRES**

6P, 8P	16.9 x 24 10 PLY Tubeless
10P - 16P	16.9 x 24 12 PLY Tubeless

**CAPACITIES**

Fuel Tank	26 gal / 98.4 ltr
Hydraulic System	26 gal / 98.4 ltr

**ENGINE**

Model and Type	Perkins 1104D-44T 4-Cylinder Tier 3 (Stage IIIA) Turbo Diesel
Horsepower	99.9 bhp (74.5 kW) @ 2200 RPM
Torque	289.1 ft lbs (392 Nm) @ 1400 RPM
Displacement	268 cu. in. (4.4 Liters)
Bore/Stroke	4.134 in / 105 mm   5.0 in / 127 mm
Compression Ratio	16.2:1
Optional on 14P and 16P	Perkins 1104D-E44TA, 127 bhp (94.5 kW), 510 ft lbs (690 Nm)

**TRANSMISSION**

Model and Type	Dana T12000 Power-Shift, electric shift
Speeds	3 forward, 3 reverse
Drive	Full-time 4WD

**AXLES**

Oscillation	10 degrees per side
Type	Heavy Duty final drive outboard planetary
Differential Lock	Electric, solenoid operated
Static Rating (Each)	40,000 lbs / 18,144 kg

**STEERING**

Type	Hydrostatic, single cylinder
Steering Turns Lock To Lock	4
Pressure Rating	1800 PSI / 124 Bar

**HYDRAULIC SYSTEM**

Pump Type	Gear
Flow Rating	25 GPM @ 2200 RPM
Pressure Rating	2500 PSI / 173 Bar

Mast Specifications

O.A.H.R.	MAST TYPE	O.A.H.L.	FREE LIFT ( Optional )
144 in / 3,658 mm	2 Section	110 in / 2,794 mm	72 in / 1,829 mm
168 in / 4,267 mm	2 Section	127 in / 3,226 mm	84 in / 2,134 mm
168 in / 4,267 mm	3 Section	98 in / 2,489 mm	56 in / 1,422 mm
252 in / 6,400 mm	3 Section	128 in / 3,251 mm	84 in / 2,134 mm
336 in / 8,534 mm	3 Section	148 in / 3,759 mm	112 in / 2,845 mm
336 in / 8,534 mm	4 Section	122 in / 3,100 mm	84 in / 2,134 mm

**STANDARD EQUIPMENT:**

Heavy Duty Clearview Roller Mast with Dual Chains • Hydraulic Mast side shift • FOPS Operator compartment • Power Assisted Oil Cooled Submerged Disc Brakes • Manual dry-disc parking brake • Power Steering • Soft-shift Power-shift Transmission • Limited Slip Differential • Tier 3 Turbo Diesel Engine • Headlights, tail lights, reverse lights, and turn signals • External side view mirrors • Wide-grip Handrails • Electric Horn and automatic Back-up alarm • Tilt steering column with anti-restart ignition and neutral safety interlock • Adjustable vinyl suspension seat with arm rests and retractable safety belt • High durability yellow paint with black trim • Front and Rear fenders are extra thick steel for maximum safety and durability • Engine oil pressure gauge, fuel gauge, tachometer, hour meter, and warning lights • High-mount air intake • Operator, maintenance and illustrated parts manuals included • 1 Year 2000 hours limited warranty (2 year engine warranty).

**OPTIONAL EQUIPMENT:**

Various mast/carriage/fork types and sizes • Various engines • Bucket attachments • Lockable sliding engine hood, fuel tank and hydraulic caps • pre-cleaner • Height and tilt indicators • Strobe Light • Additional lighting • Auxiliary • DS Rated • Vinyl Roll-up Door • Tinted Windows • Sunvisor • Deadman seat • Safety-Start Seatbelt • Heated Mirrors • Cold Weather Package • 12V Outlet and USB charger • Radio • Cupholders • Enclosed all weather operator compartment with HD heater, sliding windows, wipers, lift-off split doors • ROPS Operator compartment • Air Conditioning • Air ride suspension seat with arm rests and retractable safety belt • Frame level • Foam filled tires • Weigh scale • Towing package • Auto greasing system • Contact dealer for other options.

Liftking reserves the right to make changes in specifications shown, herein, and improvements, or discontinue manufacture at any time without notice or obligation. The information contained herein is general in nature and is not intended for specific application purposes.

7135 Islington Avenue, Woodbridge, Ontario, L4L 1V9  
Tel: 905-265-3965 | Fax: 905-851-6396